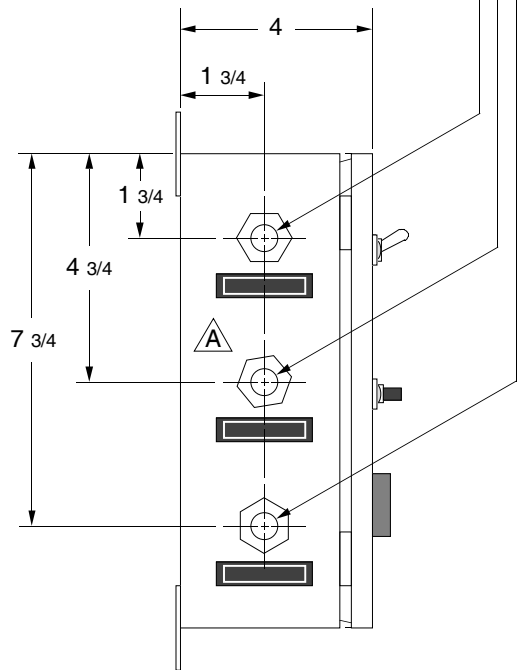
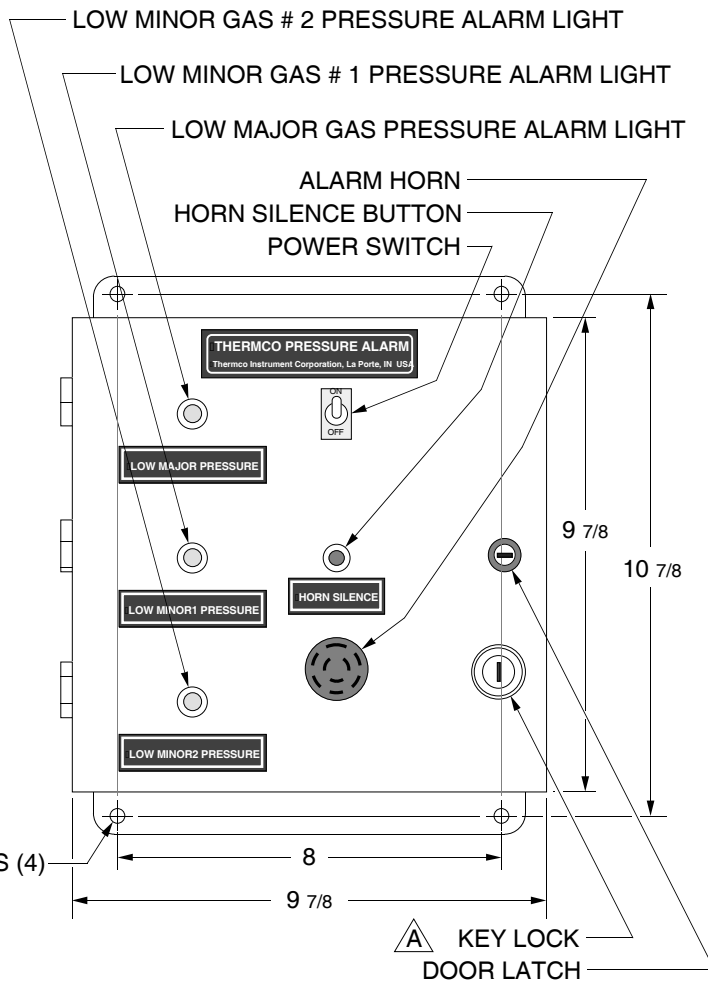


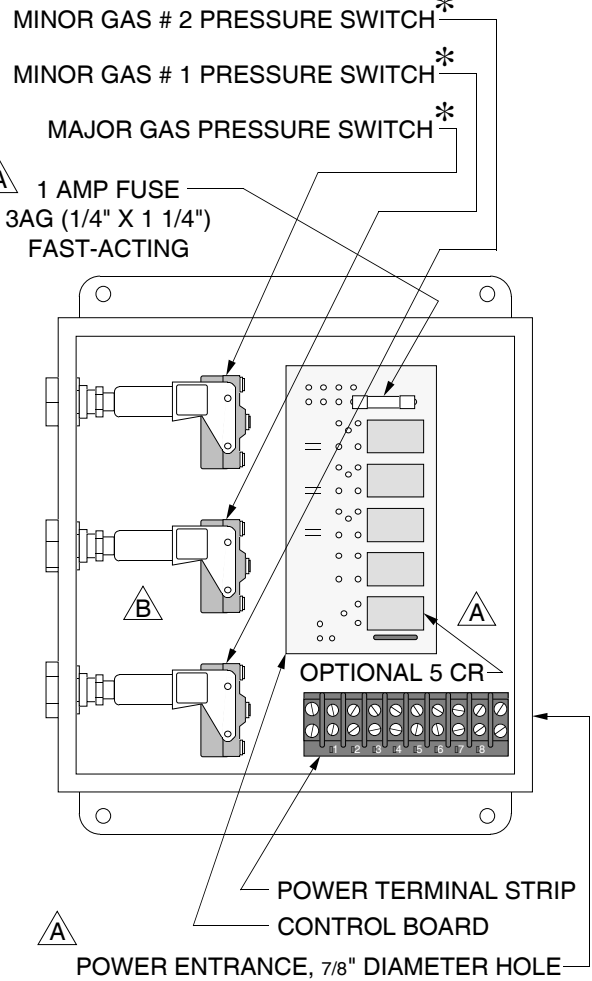
MINOR GAS # 2 INLET - 1/8" FEMALE NPT  
 MINOR GAS # 1 INLET - 1/8" FEMALE NPT  
 MAJOR GAS INLET - 1/8" FEMALE NPT



5/16" MOUNTING HOLES (4)

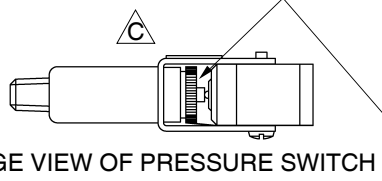


FRONT VIEW



INTERIOR VIEW

LEFT SIDE VIEW



EDGE VIEW OF PRESSURE SWITCH

\* PRESSURE SWITCH ADJUSTMENT IS LOCATED INSIDE BRACKET.

F				<b>THERMCO</b> INSTRUMENT CORPORATION LA PORTE, INDIANA USA	SCALE: N.T.S.	B. M. NO:	S. O. NO:	DRAWN BY: DB	
E					DATE: 8-15-02	CUSTOMER:		APPROVED BY:	
D					TITLE: INSTRUCTION DRAWING FOR MODEL 9503				SUPERSEDES:
C	CORRECTED INFORMATION ABOUT PRESSURE SWITCH ADJUSTMENT; ADDED VIEW	GAR	2-26-08						DRAWING NUMBER: 1-12109
B	REPLACED INLET PRESSURE SWITCHES WITH U.E. J40 SWITCHES	KGR	3-12-07		TITLE: INSTRUCTION DRAWING FOR PRESSURE ALARM SYSTEM, 115 VAC				
A	ADDED INLET LABELS; ADDED MOUNTING HOLE INFO; ADDED PRESSURE SWITCH ADJUSTMENT INFO; ADDED POWER ENTRANCE INFO; ADDED KEY LOCK AND DOOR LATCH INFO; ADDED FUSE INFO; ADDED 5 CR INFO; MOVED RELAY BOARD; ADDED "115 VAC" TO DRAWING TITLE	GAR	12-10-02	BY	DATE				
REVISIONS									