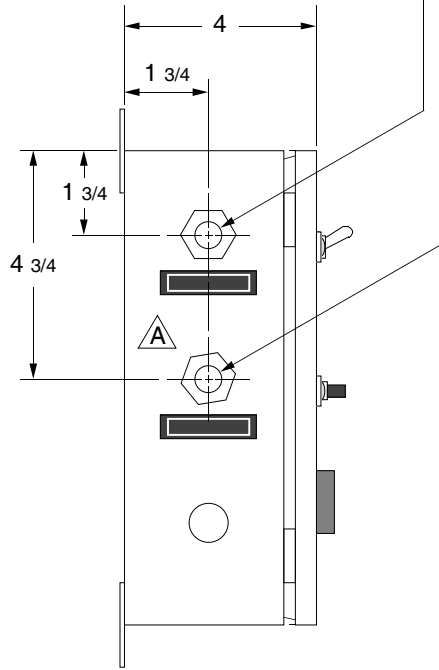


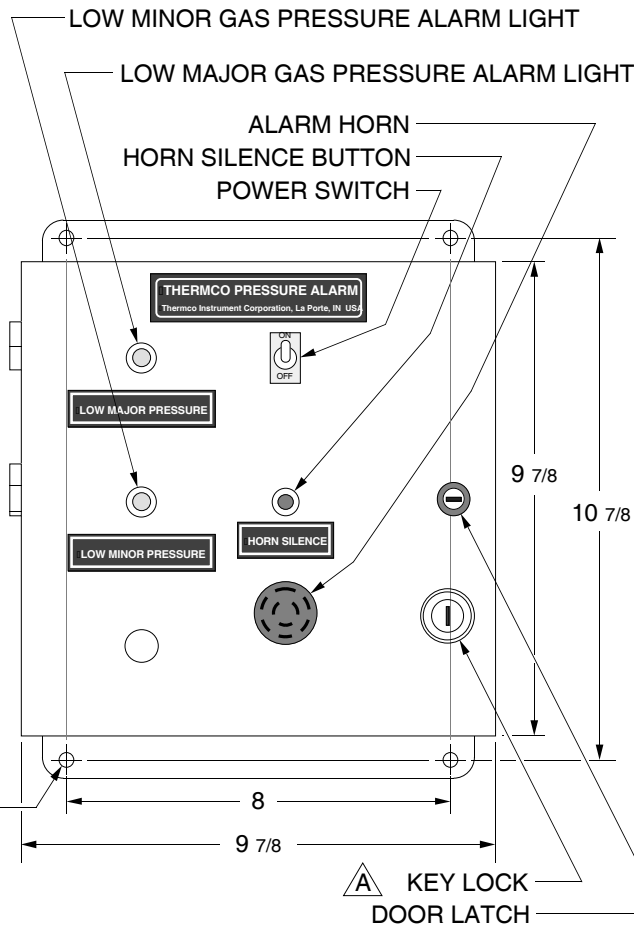
MINOR GAS INLET - 1/8" FEMALE NPT  
 MAJOR GAS INLET - 1/8" FEMALE NPT



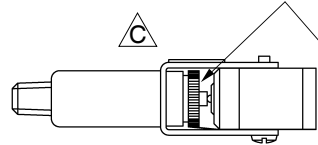
5/16" MOUNTING HOLES (4)

A

LEFT SIDE VIEW



FRONT VIEW

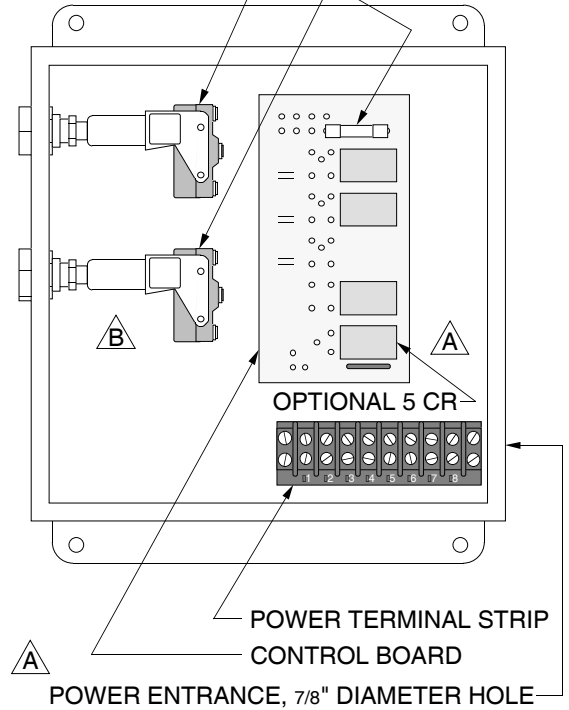


EDGE VIEW OF PRESSURE SWITCH

\* PRESSURE SWITCH ADJUSTMENT IS LOCATED INSIDE BRACKET.

MINOR GAS PRESSURE SWITCH \*  
 MAJOR GAS PRESSURE SWITCH \*

A 1 AMP FUSE  
 3AG (1/4" X 1 1/4")  
 FAST-ACTING



INTERIOR VIEW

F				<b>THERMCO</b>	INSTRUMENT CORPORATION LA PORTE, INDIANA USA		
D					SCALE: N.T.S.	B. M. NO:	S. O. NO:
C	CORRECTED INFORMATION ABOUT PRESSURE SWITCH ADJUSTMENT; ADDED VIEW	GAR	2-26-08	DATE: 8-15-02	CUSTOMER:		DRAWN BY: DB
B	REPLACED INLET PRESSURE SWITCHES WITH U.E. J40 SWITCHES	KGR	3-12-07				APPROVED BY:
A	ADDED INLET LABELS; ADDED MOUNTING HOLE INFO; ADDED PRESSURE SWITCH ADJUSTMENT INFO; ADDED POWER ENTRANCE INFO; ADDED KEY LOCK AND DOOR LATCH INFO; ADDED FUSE INFO; ADDED 5 CR INFO; MOVED RELAY BOARD; ADDED "115 VAC" TO DRAWING TITLE	GAR	12-10-02	TITLE: INSTRUCTION DRAWING FOR MODEL 9502			SUPERSEDES:
	REVISIONS	BY	DATE	PRESSURE ALARM SYSTEM, 115 VAC			DRAWING NUMBER: 1-12108