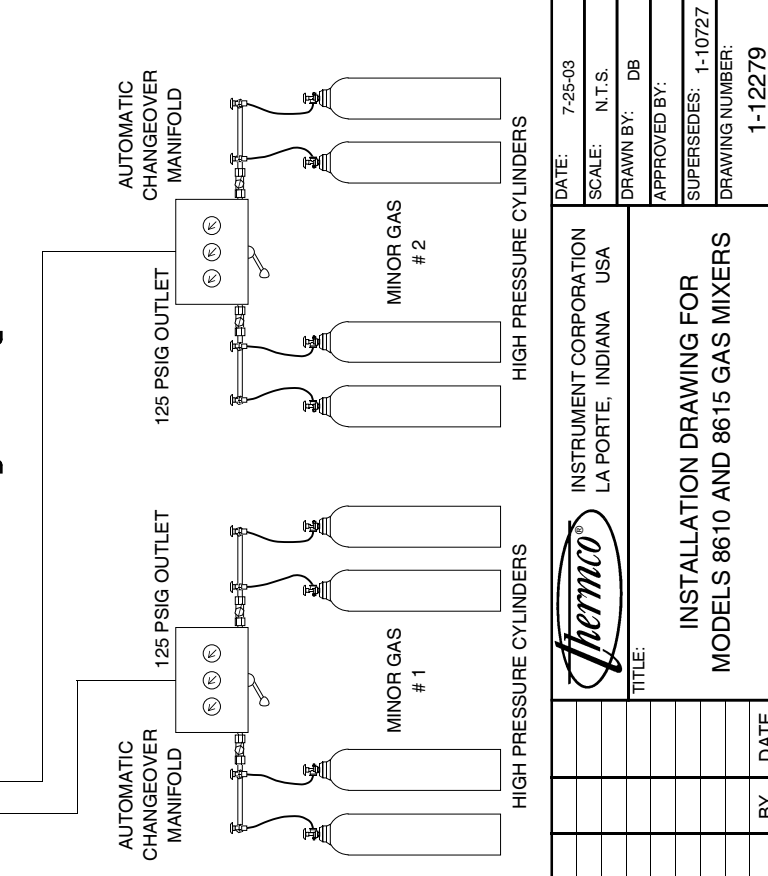
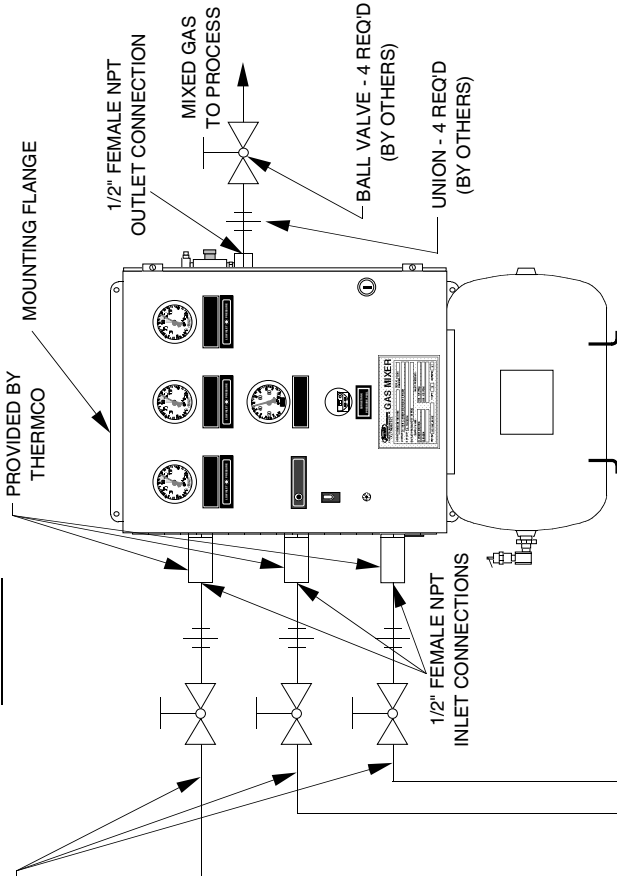
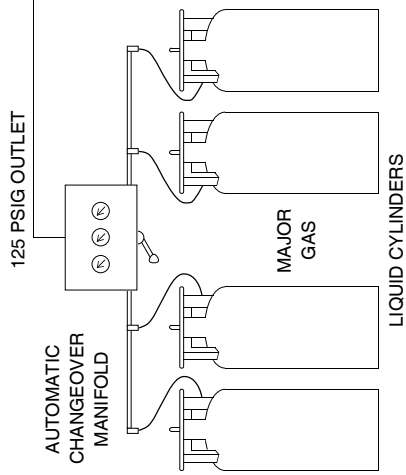


**INDOORS**



GAS TEMPERATURE REQUIREMENT 32° TO 100°F  
1/2" PIPE MINIMUM



**TWO LIQUID CYLINDERS WILL TYPICALLY BE REQUIRED TO CONTINUOUSLY PROVIDE THE MAXIMUM ARGON FLOWRATE, WHICH WOULD BE 675 SCFH FOR A TYPICAL GAS MIXER DESIGNED FOR 90% ARGON IN THE MIXTURE.**

**Mounting Location:** Gas mixer should be mounted indoors; operating temperature range is 32°F to 100°F.

**Piping Notes:** Piping should be chosen with consideration for the pressure and chemical nature of the gas, and sized large enough to deliver the proper pressure to the gas mixer under flowing conditions. Piping for the major gas must be at least 1/2".

**Power Requirements:** Gas mixers made for installation in the U.S. and Canada will require 115 VAC (± 10 VAC), 60 Hz, 1ø. For gas mixers for other locations, see the instruction manual for power requirements.

**Gas Temperature:** The three supply gases should enter the gas mixer at nearly equal temperatures to achieve the proper mixing accuracy. If the gas supplies will be at significantly differing temperatures, the resultant mixing inaccuracy should be considered, and the proper corrective action taken. Design to prevent exposure of the gas mixer to high pressures or liquid gases should be practiced. Gas temperature range is 32°F to 100°F.

**Inlet Pressures:** Standard pressures are 100 - 125 PSIG. Variations will be detailed in written instructions.

**Clearance:** Leave at least 2 feet to the sides and 3 feet to the front of the gas mixer for maintenance.

**Applicable Models:** Although Models 8610 and 8615 are shown, this drawing may also apply to some special models.

**Oxygen Piping:** All oxygen piping to the mixer should be cleaned for oxygen service and compatible with oxygen. Do not allow any grease or oil to enter gas mixers intended for oxygen service (Model 8615). Do not use oxygen in gas mixers not specially constructed for oxygen service.

**Gas Systems:** Gas systems shown are only examples; other systems may be used provided they deliver gas at the necessary pressure and flowrate.



TITLE:

**INSTALLATION DRAWING FOR  
MODELS 8610 AND 8615 GAS MIXERS**

DATE: 7-25-03  
SCALE: N.T.S.  
DRAWN BY: DB  
APPROVED BY:  
SUPERSEDES: 1-10727  
DRAWING NUMBER: 1-12279

REVISIONS	BY	DATE
H		
G		
F		
E		
D		
C		
B		
A		

INSTRUMENT CORPORATION  
LA PORTE, INDIANA USA